



www.FanAir.com

FanAir Company

FanAir Company
3215 E. Ruth Place
Orange, CA 92869

Ph: (714) 744-6444
Fx: (714) 744-5100
E-Mail sales@fanair.com

Manufacturers representatives for quality industrial air moving equipment.

SILENCER REQUEST TO QUOTE - FAX BACK TO (714) 744-5100

Silencer Request Form

Requested By: Name: Company: Phone: Fax:

Fan Data

Fan Manufacturer Serial No.: Fan Manufacturer /Size/ Model: Fan Width: Single / Double / Axial: Total Flow Rate, [ Units of CFM Cubic Feet Min.] Total Fan Static Pressure: [ Units of Inches of Water Gage.] Is Input At Actual Or Standard Flow (A/S): Actual Operating Density, if known [ units of lbs/ft^3] Average Inlet Temperature: Max Inlet Temperature: Altitude: Contaminates in airstream (Chemical / Saturation / Material):

Type of Input Fan Sound Data For Silencer Evaluation [pick 1 or 2]

- 1) Total Fan Sound Power Levels (Lw FAN)
2) Un-Silenced Sound Pressure Levels At A Criterion Point (Net Lp)

Input Total Fan Sound Power Levels:

Reference: Lw = Sound Power (dB) Re: 10-12 Watts:

Table with 9 columns: Freq. [Hz], 63, 125, 250, 500, 1000, 2000, 4000, 8000. Row 1: Total Fan Lw [db]

Are There Other Contributing Noise Factors? Describe:

Noise Contributions From Other Sources:

- 1) None
2) One Similar Fan In Close Proximity
3) Several Similar Fans In Close Proximity

Net Arithmetic Additions or Subtractions : Contributing Sound Pressure Level At Silencer:

Fan Location:

- 1) Outdoors
2) Inside - Large Space
3) Inside - Mechanical Room



www.FanAir.com

FanAir Company

FanAir Company  
3215 E. Ruth Place  
Orange, CA 92869

Ph: (714) 744-6444  
Fx: (714) 744-5100  
E-Mail sales@fanair.com

Manufacturers representatives for quality industrial air moving equipment.

SILENCER REQUEST TO QUOTE - FAX BACK TO (714) 744-5100

Silencer Data

Type of Silencer Required:

- 1) Inlet Box Silencer
- 2) Inlet Filter Silencer
- 3) Horizontal Inlet Silencer
- 4) Discharge Silencer
- 5) Circular Inlet Silencer
- 6) Circular Discharge Silencer
- 7) Pressure Blower Silencer
- 8) Stack splitter silencer
- 9) Stack silencer
- 10) Steam Blow-off silencer.

Maximum Silencer Pressure Drop: (inches of wg). \_\_\_\_\_

Design Noise Criterion [Maximum Noise level Requirement in dB'A']

Specify above Maximum Noise level Position; (1, 2, 3, 4, 5): \_\_\_\_\_

(see Diagram Page 3 Below) \_\_\_\_\_

Construction of silencer housing:

- 1) Mild steel construction. \_\_\_\_\_
- 2) 316 Stainless Steel
- 3) 304 Stainless Steel
- 4) Fiberglass Reinforced Plastic FRP - Fire retardant Vinylester or Polyester).
- 5) Special External Silencer Coating Required:

Silencer Spool Piece Required:

- 1) Rectangular \_\_\_\_\_
- 2) Circular
- 3) Rectangular To Circular

Inlet duct to Silencer:

(A) Round: Flange Inside Diameter, (I.D. Inches): \_\_\_\_\_

Flange Outside Diameter (O.D. Inches): \_\_\_\_\_

(B) Rectangular (attach drawing if possible):

Flange Width; Inside Width: \_\_\_\_\_ Outside Width: \_\_\_\_\_

Flange Height; Inside Height: \_\_\_\_\_ Outside Height: \_\_\_\_\_

Is The Silencer ducted on outlet side ? (Specify Duct Size): \_\_\_\_\_

Birdscreen - On Silencer Intake or Discharge:: \_\_\_\_\_

- 1) Standard 1 In. Mesh, Galvanized Steel
- 2) 1 In. Mesh, 304 Stainless Steel

Rainhood (Includes Standard Birdscreen):

- 1) Vertical Acoustic \_\_\_\_\_
- 2) Vertical Non-Acoustic
- 3) Horizontal Non-Acoustic
- 4) Vertical Non-Acoustic
- 5) Horizontal Non-Acoustic

Flow Measurement Devices:

- 1) Pizometer Tube
- 2) Air Monitor Dwyer Flow meter.



www.FanAir.com

FanAir Company

FanAir Company  
3215 E. Ruth Place  
Orange, CA 92869

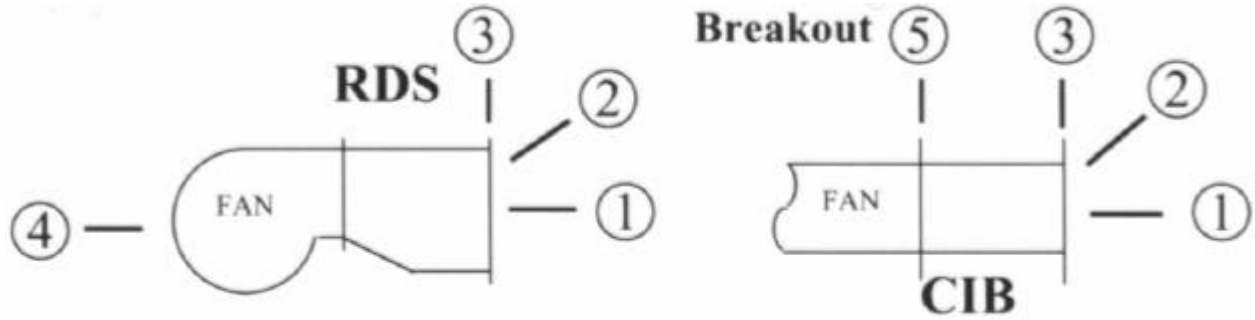
Ph: (714) 744-6444  
Fx: (714) 744-5100  
E-Mail sales@fanair.com

Manufacturers representatives for quality industrial air moving equipment.

SILENCER REQUEST TO QUOTE - FAX BACK TO (714) 744-5100

*Silencer Data*

*Noise Measurement Points*



*Noise Measurement Points*



*Noise Measurement Points*

